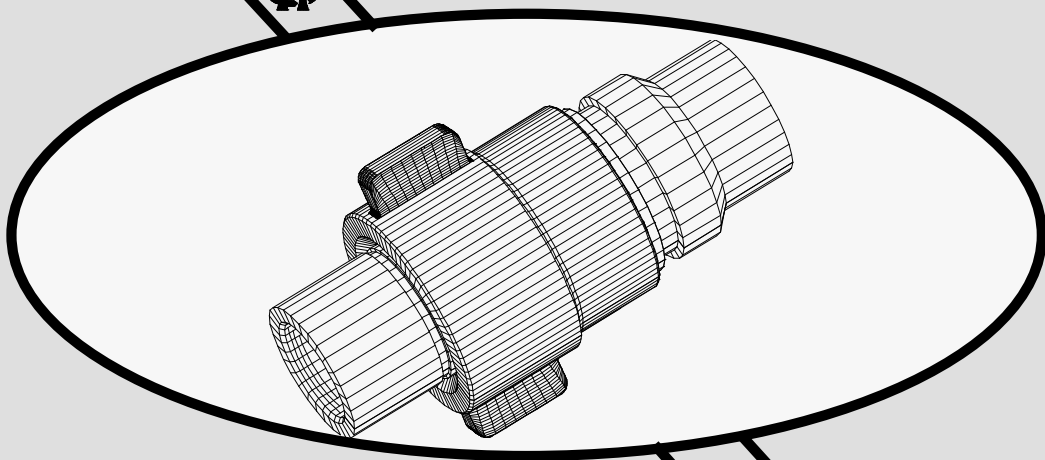


BULK FLUID TRANSFER QUICK DISCONNECT

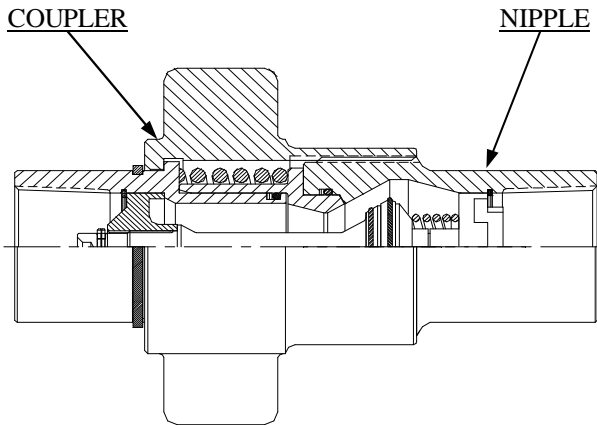


2935 ST. LOUIS AVENUE
FORT WORTH, TX 76110

**E15TV SERIES
NON-SPILL
SELF SEALING**



Thread To Connect - E15TV Series Couplings

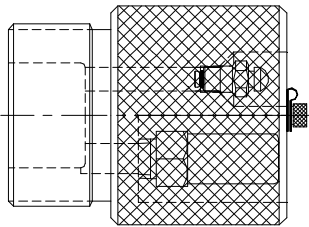


COUPLING ASSEMBLY

Hydraulics Inc. E15TV Couplings were specifically designed for use in transfer of refrigerant from transport to storage vessels. **CAUTION! User must assure compatibility of coupling body and seal materials with fluid. Consult fluid manufacturer to determine compatibility.**

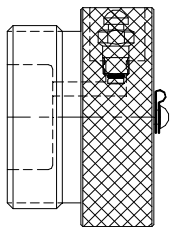
A key safety feature of this hand assembled coupling is that during Coupler and Nipple disconnect, the shut off valves close before the assembly seal vents. Virtually no fluid spill occurs. Should a valve not seal the two halves can be re-connected.

The Caps and Plugs including retention chains and rings are designed to limit Coupler and Nipple contamination and they provide safety features. Also the Coupling halves can be arranged on fluid lines to prevent liquid and vapor line cross-over errors at transfer hook up.



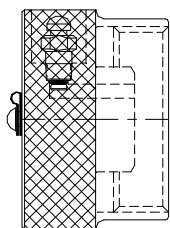
COUPLER PRESSURE RELIEF PLUG

When fully inserted, the Coupler Pressure Relief Plug is designed to open the Coupler valve and communicate refrigerant trapped in the transfer hose bore. Thermal induced pressure build-up is then controlled by the plugs 400 psi relief valve. The plug also guards against contaminants and a button exhaust valve allows trapped gas release before plug removal.



COUPLER SAFETY PLUG

The Coupler Safety Plug is optional to the Relief Plug. It guards against contaminants and is designed to prevent product loss should the coupler valve fail. The safety plug button exhaust valve allows release of trapped gas before plug removal.



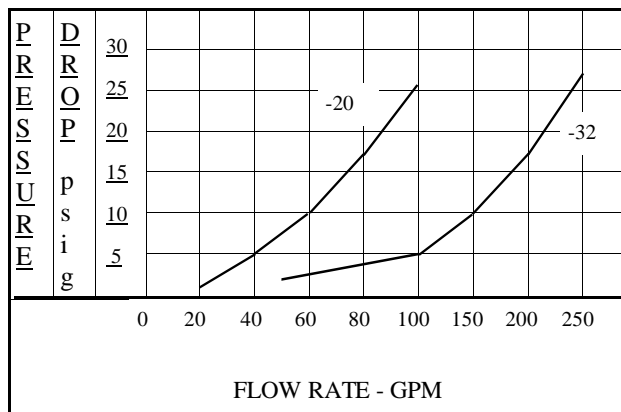
NIPPLE SAFETY CAP

The Nipple Safety Cap is a contaminant safeguard and is designed to prevent product loss should the nipple valve fail. The cap's button exhaust valve allows release of trapped gas before removing the cap.

E15TV-CN-20 Coupling

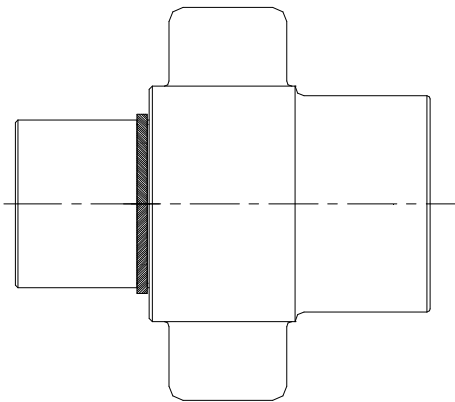
E15TV-CN-32 Coupling

PRESSURE DROP Vs. FLOW
FLUID AT 150 SSU

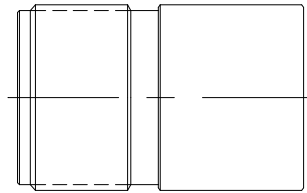




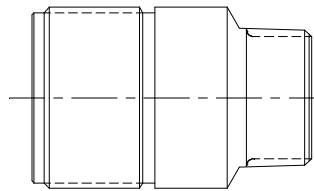
Thread To Connect - E15TV Series Couplings



COUPLER



NIPPLE



NIPPLE (CN-20-24 only)

Pressure Limitations

Coupled & Uncoupled-1500 psi max.

Safety Caps & Plug-500 psi max.

Operating Temp.

-40° F to + 150° F

Seals (other available)

Fluorolon coated Neoprene o-rings

Teflon back-up rings

Fluid Loss @ Disconnect

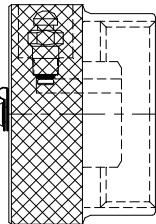
E15TV-CN-20 - 0.68ML

E15TV-CN-32 - 1.74 ML

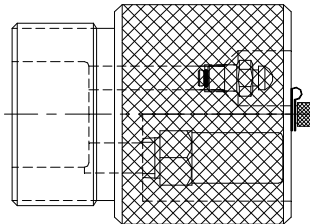
Material-Coupling - Caps & Plugs

Bodies - Anodized Aluminum

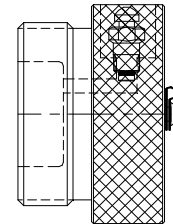
All other cadmium plated carbon steel.



NIPPLE SAFETY CAP
CHAIN & RING



COUPLER PRESSURE RELIEF PLUG
CHAIN & RING



COUPLER SAFETY PLUG
CHAIN & RING

pub78

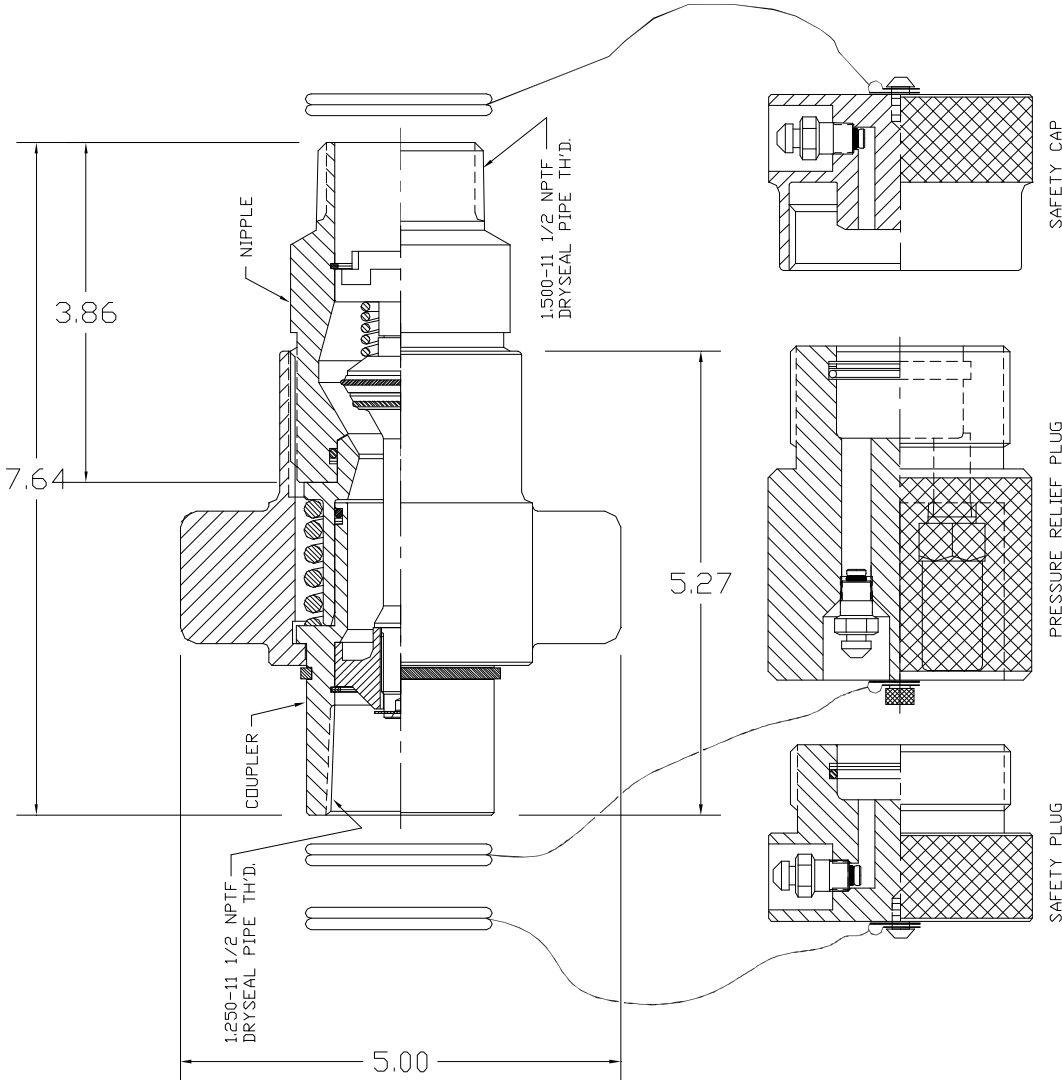
BODY SIZE	COUPLING PART No.	COUPLER PART No.	NIPPLE PART No.	SAFETY CAP PART No.	SAFETY PLUG PART No.	PRESSURE RELIEF PLUG PART No.
1-1/4"	E15TV-CN-20-24	E15TV-C-20	E15TV-N-20-24	E15TV-SC-20	E15TV-SP-20	E15TV-PRP-20
1-1/4"	E15TV-CN-20	E15TV-C-20	E15TV-N-20	E15TV-SC-20	E15TV-SP-20	E15TV-PRP-20
2.0"	E15TV-CN-32	E15TV-C-32	E15TV-N-32	E15TV-SC-32	E15TV-SP-32	E15TV-PRP-32

BODY SIZE	COUPLING PART No.	DIMENSIONS - INCHES				FEMALE PIPE THD SIZE	MALE PIPE THD SIZE	WEIGHT POUNDS
		COUPLING LENGTH	COUPLER LENGTH	NIPPLE LENGTH	ACROSS WING NUT			
1-1/4"	E15TV-CN-20-24	7.64	5.27	3.86	5.00	1-1/4:11-1/2	1-1/2:11-1/2	5
1-1/4"	E15TV-CN-20	7.64	5.27	3.86	5.00	1-1/4:11-1/2		5
2.0"	E15TV-CN-32	11.53	8.17	5.75	6.16	2:11-1/2		14

LTR	REVISION DESCRIPTION	DATE	APPROVED
A	ECN-486	8-17-00	

NOTES:

- PART NUMBERS:
 E1STV-CN-20-24 COUPLING
 E1STV-C-20 COUPLER
 E1STV-N-20-24 NIPPLE
 E1STV-SP-20 SAFETY PLUG
 E1STV-SC-20 SAFETY CAP
 E1STV-PRP-20 PRESSURE RELIEF PLUG
- MATERIAL: ALUMINUM BODY W/STEEL VALVES, NUT, RINGS AND SPRINGS.
- PLATING: COUPLER & NIPPLE - COMBINATION OF HARD ANODIZE AND ANODIZE WITH BLACK DICHROMATE SEAL
 NUT & VALVE ASSEMBLIES - ZINC WITH DICHROMATE SEAL
- SEALS: PRODUCT PRICED WITH NEOPRENE -- SUFFIX PART NUMBERS WITH COMPOUND LETTER DESIGNATOR FOR OTHER TYPE - B= BUNA-N, K= KALREZ
- COULING OPERATING LIMITATIONS:
 FLUID LOSS AT DISCONNECT - 68 ml.
 FLUID PRESSURE (MAX) COUPLED - MINUS 28"Hg TO 1500 P.S.I.G.
 FLUID PRESSURE (MAX) UNCOUPLED - MINUS 12"Hg TO 1500 P.S.I.G.
 TEMPERATURE RANGE - -40°F TO 150°F
- SAFETY CAP AND SAFETY PLUG OPERATING LIMITATIONS:
 FLUID PRESSURE (MAX) - 500 P.S.I.G.
 TEMPERATURE RANGE - -40°F TO 150°F
- PRESSURE RELIEF PLUG VALVE SET AT 400 P.S.I.
- WEIGHTS:
 COUPLER: 4 lbs.
 NIPPLE: 1 lb.
 SAFETY CAP: 1 lb.
 SAFETY PLUG: 1 lb.
 PRESSURE RELIEF PLUG: 1 lb. 3 oz.



△ MUST BE FULLY INSERTED FOR PROPER FUNCTION

SIGNATURE:		DATE	E1STRAULICS PRO. LUIS A. V. GUS P.O. BOX 100, BIRMINGHAM, AL 35202	
DRAWN S. WESTOVER	6-8-98			
CHECKED D.F. HOWETH	6-14-98			
APPROVED D.F. HOWETH	6-14-98			
END FILE 07000270	6-14-98			
UNLESS OTHERWISE NOTED		TITLE		
1. DIMENSIONS ARE IN INCHES		E1STV SERIES SELF-SEAL COUPLING		
2. DIMENSIONS ARE IN MILLIMETERS		1-1/4" EQUIVALENT BORE SIZE W/SEALS		
3. DIMENSIONS ARE IN MILLIMETERS		MATERIAL: SEE NOTE 2		
4. ALL DIMENSIONS ARE TO CENTER UNLESS OTHERWISE SPECIFIED		PLATE: SEE NOTE 3		
5. UNLESS OTHERWISE NOTED		HEAT TREAT: NONE		
6. DIMENSIONS ARE TO CENTER UNLESS OTHERWISE SPECIFIED		OTHER: NONE		
7. DIMENSIONS ARE TO CENTER UNLESS OTHERWISE SPECIFIED		DWG. NO. NONE		
8. DIMENSIONS ARE TO CENTER UNLESS OTHERWISE SPECIFIED		SCALE NONE		
9. DIMENSIONS ARE TO CENTER UNLESS OTHERWISE SPECIFIED		SHEET 1 OF 1		
10. DIMENSIONS ARE TO CENTER UNLESS OTHERWISE SPECIFIED		E1STV-CN-20-24		
11. DIMENSIONS ARE TO CENTER UNLESS OTHERWISE SPECIFIED		1		
12. DIMENSIONS ARE TO CENTER UNLESS OTHERWISE SPECIFIED		A		

LTR	REVISION DESCRIPTION	DATE	APPROVED
A	ECN-486	8-17-00	
B	ADDED FLAG NOTES	10-10-01	

NOTES:

1. PART NUMBERS:

- E15TV-CN-32 COUPLING
- E15TV-C-32 COUPLER
- E15TV-N-32 NIPPLE
- E15TV-SP-32 SAFETY PLUG
- E15TV-SC-32 SAFETY CAP
- E15TV-PRP-32 PRESSURE RELIEF PLUG

2. MATERIAL: ALUMINUM BODY W/STEEL VALVES, NUT, RINGS AND SPRINGS.

3. PLATING: COUPLER & NIPPLE - COMBINATION OF HARD ANODIZE AND ANODIZE WITH BLACK DICHROMATE SEAL
NUT & VALVE ASSEMBLIES - ZINC WITH DICHROMATE SEAL

4. SEALS: PRODUCT PRICED WITH NEOPRENE -- SUFFIX PART NUMBERS WITH COMPOUND LETTER DESIGNATOR FOR OTHER TYPE - B= BUNA-N, K= KALREZ

5. COUPLING OPERATING LIMITATIONS:

FLUID LOSS AT DISCONNECT: 1.74 mL
 FLUID PRESSURE (MAX): COUPLED - MINUS 28"Hg TO 1500 P.S.I.G.
 FLUID PRESSURE (MAX): UNCOUPLED - MINUS 12"Hg TO 1500 P.S.I.G.
 TEMPERATURE RANGE - -40°F TO 150°F

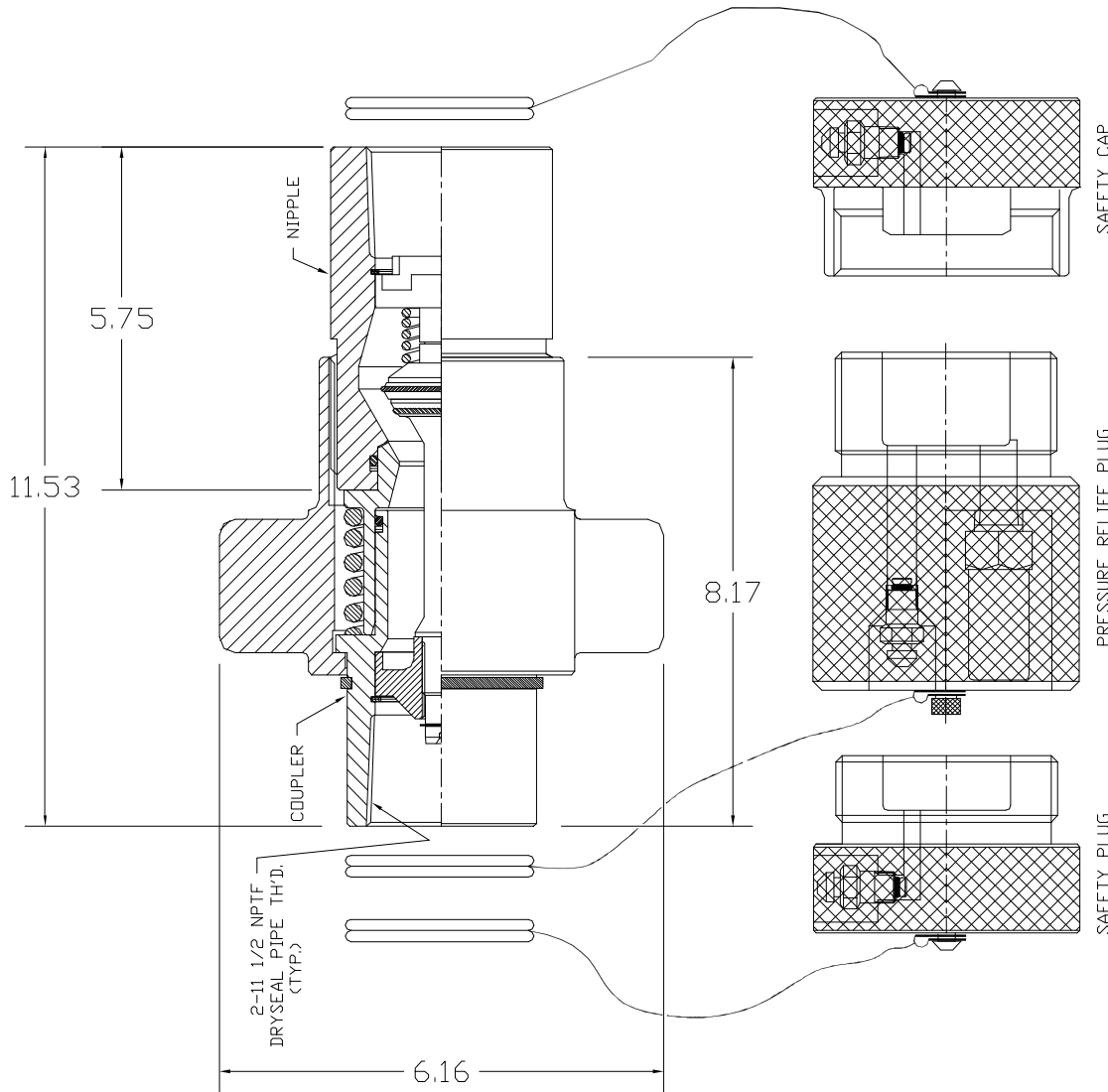
6. SAFETY CAP AND SAFETY PLUG OPERATING LIMITATIONS:

FLUID PRESSURE (MAX.) - 500 P.S.I.G.
 TEMPERATURE RANGE - -40°F TO 150°F

7. PRESSURE RELIEF PLUG VALVE SET AT 400 P.S.I.

8. WEIGHTS

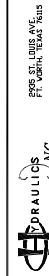
- COUPLER: 12 lbs.
- NIPPLE: 3 lbs. 11 oz.
- SAFETY CAP: 2 lbs. 10 oz.
- SAFETY PLUG: 2 lbs. 11 oz.
- PRESSURE RELIEF PLUG: 5 lbs.



▷ SAFETY PLUG & CAP POPPET VALVES TO VENT TRAPPED GAS BEFORE REMOVING THESE ARTICLES.

▷ MUST BE FULLY INSERTED IN COUPLER TO LIMIT PRESSURE IN HOSE BORE TO 400 P.S.I.

SIGNATURE	DATE	DRG NO.	SCALE	DRG CHG
DRAWN: S. WESTOVER CHECKED: D.F. HOWETH APPROVED: D.F. HOWETH	6-18-00 6-28-00 6-28-00	1000	1:1	1
TITLE		E15TV SERIES SELF-SEAL COUPLING BORE SIZE V/SEALS		
UNLESS OTHERWISE NOTED		2" EQUIVALENT		
1. UNLESS ALL DIMENSIONS ARE SPECIFIED IN INCHES, DIMENSIONS SHALL BE IN MILLIMETERS TO THE NEAREST 0.100 MM.		MTU: SEE NOTE 2		
2. ALL DIMENSIONS SHALL BE TO UNLESS OTHERWISE NOTED.		PLATE: SEE NOTE 3		
3. ALL DIMENSIONS SHALL BE TO UNLESS OTHERWISE NOTED.		HEAT TREAT: NONE		
4. ALL DIMENSIONS SHALL BE TO UNLESS OTHERWISE NOTED.		OTHER: NONE		
5. WORKING FILE		DRAWING NO. E15TV-CN-32		
6. TOLERANCES		SCALE: NONE (SHEET 1 OF 1)		
7. DIMENSIONS SHALL BE TO UNLESS OTHERWISE NOTED.				
8. DIMENSIONS SHALL BE TO UNLESS OTHERWISE NOTED.				
9. DIMENSIONS SHALL BE TO UNLESS OTHERWISE NOTED.				
10. DIMENSIONS SHALL BE TO UNLESS OTHERWISE NOTED.				
11. DIMENSIONS SHALL BE TO UNLESS OTHERWISE NOTED.				
12. DIMENSIONS SHALL BE TO UNLESS OTHERWISE NOTED.				
13. DIMENSIONS SHALL BE TO UNLESS OTHERWISE NOTED.				
14. DIMENSIONS SHALL BE TO UNLESS OTHERWISE NOTED.				
15. DIMENSIONS SHALL BE TO UNLESS OTHERWISE NOTED.				
16. DIMENSIONS SHALL BE TO UNLESS OTHERWISE NOTED.				
17. DIMENSIONS SHALL BE TO UNLESS OTHERWISE NOTED.				
18. DIMENSIONS SHALL BE TO UNLESS OTHERWISE NOTED.				
19. DIMENSIONS SHALL BE TO UNLESS OTHERWISE NOTED.				
20. DIMENSIONS SHALL BE TO UNLESS OTHERWISE NOTED.				
21. DIMENSIONS SHALL BE TO UNLESS OTHERWISE NOTED.				
22. DIMENSIONS SHALL BE TO UNLESS OTHERWISE NOTED.				
23. DIMENSIONS SHALL BE TO UNLESS OTHERWISE NOTED.				
24. DIMENSIONS SHALL BE TO UNLESS OTHERWISE NOTED.				
25. DIMENSIONS SHALL BE TO UNLESS OTHERWISE NOTED.				
26. DIMENSIONS SHALL BE TO UNLESS OTHERWISE NOTED.				
27. DIMENSIONS SHALL BE TO UNLESS OTHERWISE NOTED.				
28. DIMENSIONS SHALL BE TO UNLESS OTHERWISE NOTED.				
29. DIMENSIONS SHALL BE TO UNLESS OTHERWISE NOTED.				
30. DIMENSIONS SHALL BE TO UNLESS OTHERWISE NOTED.				
31. DIMENSIONS SHALL BE TO UNLESS OTHERWISE NOTED.				
32. DIMENSIONS SHALL BE TO UNLESS OTHERWISE NOTED.				
33. DIMENSIONS SHALL BE TO UNLESS OTHERWISE NOTED.				
34. DIMENSIONS SHALL BE TO UNLESS OTHERWISE NOTED.				
35. DIMENSIONS SHALL BE TO UNLESS OTHERWISE NOTED.				
36. DIMENSIONS SHALL BE TO UNLESS OTHERWISE NOTED.				
37. DIMENSIONS SHALL BE TO UNLESS OTHERWISE NOTED.				
38. DIMENSIONS SHALL BE TO UNLESS OTHERWISE NOTED.				
39. DIMENSIONS SHALL BE TO UNLESS OTHERWISE NOTED.				
40. DIMENSIONS SHALL BE TO UNLESS OTHERWISE NOTED.				
41. DIMENSIONS SHALL BE TO UNLESS OTHERWISE NOTED.				
42. DIMENSIONS SHALL BE TO UNLESS OTHERWISE NOTED.				
43. DIMENSIONS SHALL BE TO UNLESS OTHERWISE NOTED.				
44. DIMENSIONS SHALL BE TO UNLESS OTHERWISE NOTED.				
45. DIMENSIONS SHALL BE TO UNLESS OTHERWISE NOTED.				
46. DIMENSIONS SHALL BE TO UNLESS OTHERWISE NOTED.				
47. DIMENSIONS SHALL BE TO UNLESS OTHERWISE NOTED.				
48. DIMENSIONS SHALL BE TO UNLESS OTHERWISE NOTED.				
49. DIMENSIONS SHALL BE TO UNLESS OTHERWISE NOTED.				
50. DIMENSIONS SHALL BE TO UNLESS OTHERWISE NOTED.				
51. DIMENSIONS SHALL BE TO UNLESS OTHERWISE NOTED.				
52. DIMENSIONS SHALL BE TO UNLESS OTHERWISE NOTED.				
53. DIMENSIONS SHALL BE TO UNLESS OTHERWISE NOTED.				
54. DIMENSIONS SHALL BE TO UNLESS OTHERWISE NOTED.				
55. DIMENSIONS SHALL BE TO UNLESS OTHERWISE NOTED.				
56. DIMENSIONS SHALL BE TO UNLESS OTHERWISE NOTED.				
57. DIMENSIONS SHALL BE TO UNLESS OTHERWISE NOTED.				
58. DIMENSIONS SHALL BE TO UNLESS OTHERWISE NOTED.				
59. DIMENSIONS SHALL BE TO UNLESS OTHERWISE NOTED.				
60. DIMENSIONS SHALL BE TO UNLESS OTHERWISE NOTED.				
61. DIMENSIONS SHALL BE TO UNLESS OTHERWISE NOTED.				
62. DIMENSIONS SHALL BE TO UNLESS OTHERWISE NOTED.				
63. DIMENSIONS SHALL BE TO UNLESS OTHERWISE NOTED.				
64. DIMENSIONS SHALL BE TO UNLESS OTHERWISE NOTED.				
65. DIMENSIONS SHALL BE TO UNLESS OTHERWISE NOTED.				
66. DIMENSIONS SHALL BE TO UNLESS OTHERWISE NOTED.				
67. DIMENSIONS SHALL BE TO UNLESS OTHERWISE NOTED.				
68. DIMENSIONS SHALL BE TO UNLESS OTHERWISE NOTED.				
69. DIMENSIONS SHALL BE TO UNLESS OTHERWISE NOTED.				
70. DIMENSIONS SHALL BE TO UNLESS OTHERWISE NOTED.				
71. DIMENSIONS SHALL BE TO UNLESS OTHERWISE NOTED.				
72. DIMENSIONS SHALL BE TO UNLESS OTHERWISE NOTED.				
73. DIMENSIONS SHALL BE TO UNLESS OTHERWISE NOTED.				
74. DIMENSIONS SHALL BE TO UNLESS OTHERWISE NOTED.				
75. DIMENSIONS SHALL BE TO UNLESS OTHERWISE NOTED.				
76. DIMENSIONS SHALL BE TO UNLESS OTHERWISE NOTED.				
77. DIMENSIONS SHALL BE TO UNLESS OTHERWISE NOTED.				
78. DIMENSIONS SHALL BE TO UNLESS OTHERWISE NOTED.				
79. DIMENSIONS SHALL BE TO UNLESS OTHERWISE NOTED.				
80. DIMENSIONS SHALL BE TO UNLESS OTHERWISE NOTED.				
81. DIMENSIONS SHALL BE TO UNLESS OTHERWISE NOTED.				
82. DIMENSIONS SHALL BE TO UNLESS OTHERWISE NOTED.				
83. DIMENSIONS SHALL BE TO UNLESS OTHERWISE NOTED.				
84. DIMENSIONS SHALL BE TO UNLESS OTHERWISE NOTED.				
85. DIMENSIONS SHALL BE TO UNLESS OTHERWISE NOTED.				
86. DIMENSIONS SHALL BE TO UNLESS OTHERWISE NOTED.				
87. DIMENSIONS SHALL BE TO UNLESS OTHERWISE NOTED.				
88. DIMENSIONS SHALL BE TO UNLESS OTHERWISE NOTED.				
89. DIMENSIONS SHALL BE TO UNLESS OTHERWISE NOTED.				
90. DIMENSIONS SHALL BE TO UNLESS OTHERWISE NOTED.				
91. DIMENSIONS SHALL BE TO UNLESS OTHERWISE NOTED.				
92. DIMENSIONS SHALL BE TO UNLESS OTHERWISE NOTED.				
93. DIMENSIONS SHALL BE TO UNLESS OTHERWISE NOTED.				
94. DIMENSIONS SHALL BE TO UNLESS OTHERWISE NOTED.				
95. DIMENSIONS SHALL BE TO UNLESS OTHERWISE NOTED.				
96. DIMENSIONS SHALL BE TO UNLESS OTHERWISE NOTED.				
97. DIMENSIONS SHALL BE TO UNLESS OTHERWISE NOTED.				
98. DIMENSIONS SHALL BE TO UNLESS OTHERWISE NOTED.				
99. DIMENSIONS SHALL BE TO UNLESS OTHERWISE NOTED.				
100. DIMENSIONS SHALL BE TO UNLESS OTHERWISE NOTED.				



6000 5th HURDIS AVE.
 FT. LAUDERDALE, FL 33309



Tel: 817-923-1965
Fax: 817-927-8002

Plant & Offices
2935 St. Louis Ave
P.O. Box 6479
Ft. Worth, TX 76115-0479

OFFER OF SALE

The items described in this document are hereby offered for sale at prices to be established by Hydraulics inc. and its authorized distributors. This offer and its acceptance by any customer ("Buyer") shall be governed by all the following Terms and Conditions. Buyer's order for any item described in this document, when communicated to Hydraulics inc., or any authorized distributor ("Seller") verbally or in writing, shall constitute acceptance of this offer.

1. Terms and Conditions of Sale: All descriptions, quotations, proposals, offers, acknowledgments, acceptances and sales of sellers products are subject to and shall be governed exclusively by the terms and conditions stated herein. Buyers acceptance of any offer to sell is limited to these terms and conditions. Any terms and conditions in addition to, or inconsistent with those stated herein, proposed by the Buyer in any acceptance of an offer by Seller, are hereby objected to. No other such additional, different or inconsistent terms and conditions shall become a part of the contract between Buyer and seller unless expressly accepted in writing by Seller. Sellers acceptance of any offer to purchase by Buyer is expressly conditional upon Buyer's assent to all terms and conditions stated herein, including any terms in addition to, or inconsistent with those contained in the Buyers offer. Acceptance of Sellers products shall in all events constitute such assent.

2. Payment: Payment for goods purchased by Buyer shall be due in 30 days from date of shipment with 1/2 % discount off goods purchased if paid in 10 days from the date of shipment. Buyer claims for omissions or shortages in a shipment shall be waived unless Seller receives notice thereof within 30 days after Buyer's receipt of the shipment.

3. Delivery: Delivery shall be made F.O.B. sellers plant, Ft. Worth TX. Regardless of the method of delivery, however, risk of loss shall pass to the Buyer upon Seller's delivery to the carrier. Any delivery dates shown are approximate only and seller shall have no liability for any delays in delivery. All offers and payments are in U.S.A. dollars.

4. Warranty: Seller warrants that the items sold hereunder shall be free from defects in material and workmanship for a period of 365 days from the date of shipment to Buyer. THIS WARRANTY COMPRISES THE SOLE AND ENTIRE WARRANTY PERTAINING TO ITEMS PROVIDED HEREUNDER. SELLER MAKES NO OTHER WARRANTY, GUARANTEE, OR REPRESENTATION OF ANY KIND WHATSOEVER. ALL OTHER WARRANTIES, INCLUDING BUT NOT LIMITED TO, MERCHANTABILITY AND FITNESS FOR PURPOSE WHETHER EXPRESS, IMPLIED, OR ARISING BY OPERATION OF LAW, TRADE USAGE, OR COURSE OF DEALING ARE HEREBY DISCLAIMED.

5. Limitation Of Remedy: SELLER'S LIABILITY ARISING FROM OR IN ANY WAY CONNECTED WITH THE ITEMS SOLD OR THIS CONTRACT SHALL BE LIMITED EXCLUSIVELY TO REPAIR OR REPLACEMENT OF THE ITEMS SOLD OR REFUND OF THE PURCHASE PRICE PAID BY BUYER, AT SELLER'S SOLE OPTION. IN NO EVENT SHALL SELLER BE LIABLE FOR ANY INCIDENTAL, CONSEQUENTIAL OR SPECIAL DAMAGES OF ANY KIND OR NATURE WHATSOEVER, INCLUDING BUT NOT LIMITED TO LOST PROFITS ARISING FROM OR IN ANY WAY CONNECTED WITH THIS AGREEMENT OR ITEMS SOLD HEREUNDER, WHETHER ALLEGED TO ARISE FROM BREACH OF CONTRACT, EXPRESS OR IMPLIED WARRANTY, OR IN TORT, INCLUDING WITHOUT LIMITATION, NEGLIGENCE, FAILURE TO WARN OR STRICT LIABILITY.

6. Changes, Reschedules and Cancellations: Buyer may request to modify the designs or specifications for the items sold hereunder as well as the quantities and delivery dates thereof, or may request to cancel all or part of this

order, however, no such requested modification or cancellation shall become part of the contract between the Buyer and Seller unless accepted by the Seller in a written amendment to this Agreement. Acceptance of any such requested modification or cancellation shall be at the Seller's discretion, and shall be upon such terms and conditions as Seller may require.

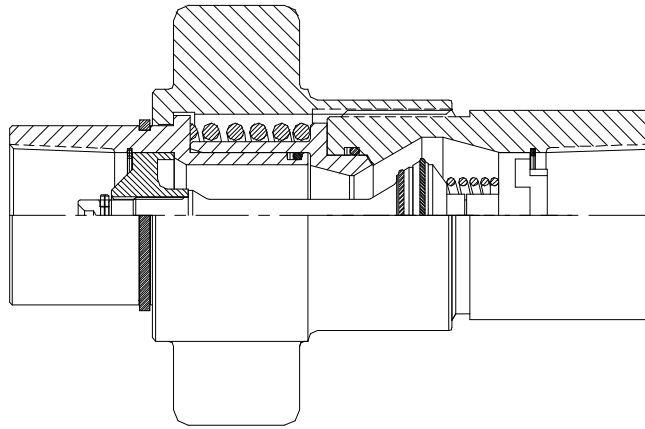
7. Returns: Buyer may request to return items sold hereunder, however no such requests shall become part of the contract between Buyer and Seller unless accepted by the Seller in a written amendment to this Agreement.

8. Taxes: Unless otherwise indicated on the face hereof, all prices and charges are exclusive of excise, sales, use, property, occupational or like taxes which may be imposed by any taxing authority upon the manufacture, sale or delivery of the items sold hereunder. If any such tax must be paid by the Seller or if Seller is liable for the collection of such tax, the amount thereof shall be in addition to the amounts of the items sold. Buyer agrees to pay all such taxes or to reimburse Seller therefore upon receipt of its invoice. If Buyer claims exemption from any sales, use or other tax imposed by any taxing authority, Buyer shall save Seller harmless from against such tax, together with any interest or penalties thereon which may be assessed if the items are held to be taxable.

9. Force Majeure: Seller does not assume the risk of and shall not be liable for delay or failure to perform any of Seller's obligations by reason of circumstances beyond control of Seller (hereinafter events of Force Majeure). Events of Force Majeure shall include without limitation, accidents, acts of God, strikes or labor disputes, acts ,laws, rules or regulations of any government agency, fires, floods, delays or failures in delivery of carriers or suppliers, shortages of materials and any other cause beyonds Seller's control.

10. Entire Agreement / Governing Law:The terms and conditions set forth herein, together with any amendments, modifications and any terms or conditions expressly accepted by Seller in writing, shall constitute the entire Agreement concerning the items sold, and there are no oral or other representations or agreements which pertain thereto. This agreement shall be governed in all respects by the law of the State of Texas. No actions arising out of sale of the items sold hereunder or this Agreement may be brought by either party more than two (2) years after the cause of the action accrues.

**E15TV SERIES
BULK FLUID TRANSFER
QUICK CONNECT COUPLING**



**Plant & Offices
2935 St. Louis Ave.
P.O. Box 6479
Ft. Worth, TX 76115-0479**

**Tel: 817-923-1965
Fax: 817-927-8002
Website:
<http://www.hydraulicsinc.com>**

**CONTACT OUR FORT WORTH OFFICE FOR ADDITIONAL PRODUCT
INFORMATION ASK FOR OUR NEAREST STOCKING DISTRIBUTOR**

